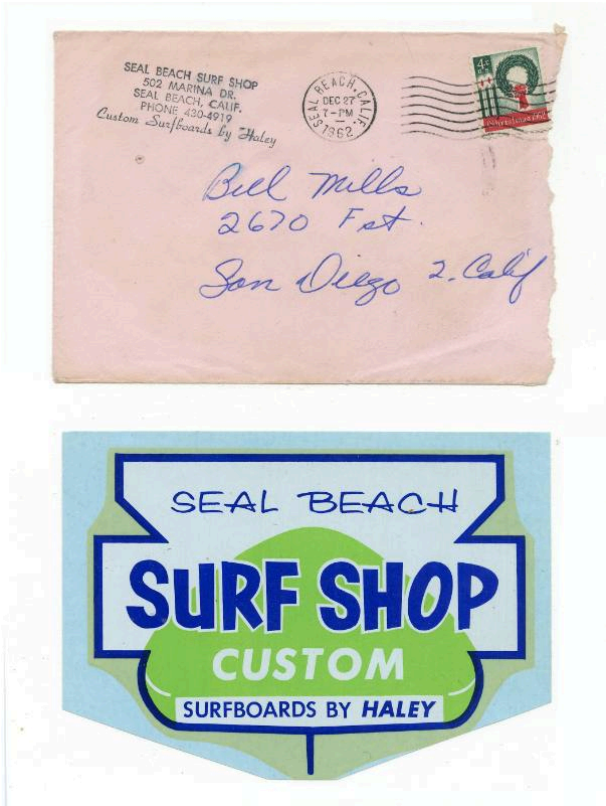


# Basic Detail Report

---



## Seal Beach Surf Shop Surfboard by Haley Decal w/ Envelope with return address Seal Beach Surf Shop Postmark Seal Beach 4¢ Stamp

### Primary Maker

Robert Hendrikson

### Description

This decal features blue and white lettering, a blue border, and green accents. The accompanying envelope is light pink in color, and contains the return address for the Seal Beach Surf Shop.

### Dimensions

4 x 5 11/16 in. (10.2 x 14.4 cm) 4 1/16 x 6 in. (10.3 x 15.2 cm)